

SHB Antibody
Rabbit mAb
Catalog # AP93165**Specification**

SHB Antibody - Product Information

Application	WB
Primary Accession	Q15464
Reactivity	Rat
Clonality	Monoclonal
Other Names	
Shb;	
Isotype	Rabbit IgG
Host	Rabbit
Calculated MW	55042 Da

SHB Antibody - Additional Information

Dilution	WB~~1:1000
Purification	Affinity-chromatography
Immunogen	A synthesized peptide derived from human SHB
Description	Adapter protein which regulates several signal transduction cascades by linking activated receptors to downstream signaling components. May play a role in angiogenesis by regulating FGFR1, VEGFR2 and PDGFR signaling.
Storage Condition and Buffer	Rabbit IgG in phosphate buffered saline , pH 7.4, 150mM NaCl, 0.02% sodium azide and 50% glycerol. Store at +4°C short term. Store at -20°C long term. Avoid freeze / thaw cycle.

SHB Antibody - Protein Information**Name SHB****Function**

Adapter protein which regulates several signal transduction cascades by linking activated receptors to downstream signaling components. May play a role in angiogenesis by regulating FGFR1, VEGFR2 and PDGFR signaling. May also play a role in T-cell antigen receptor/TCR signaling, interleukin-2 signaling, apoptosis and neuronal cells differentiation by mediating basic-FGF and NGF-induced signaling cascades. May also regulate IRS1 and IRS2 signaling in insulin- producing cells.

Cellular Location

Cytoplasm. Cell membrane; Peripheral membrane protein; Cytoplasmic side. Note=Associates with

membrane lipid rafts upon TCR stimulation

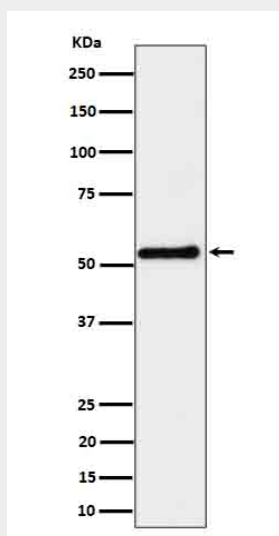
Tissue Location

Widely expressed..

SHB Antibody - Protocols

Provided below are standard protocols that you may find useful for product applications.

- [Western Blot](#)
- [Blocking Peptides](#)
- [Dot Blot](#)
- [Immunohistochemistry](#)
- [Immunofluorescence](#)
- [Immunoprecipitation](#)
- [Flow Cytometry](#)
- [Cell Culture](#)

SHB Antibody - Images

Western blot analysis of SHB expression in K562 cell lysate.